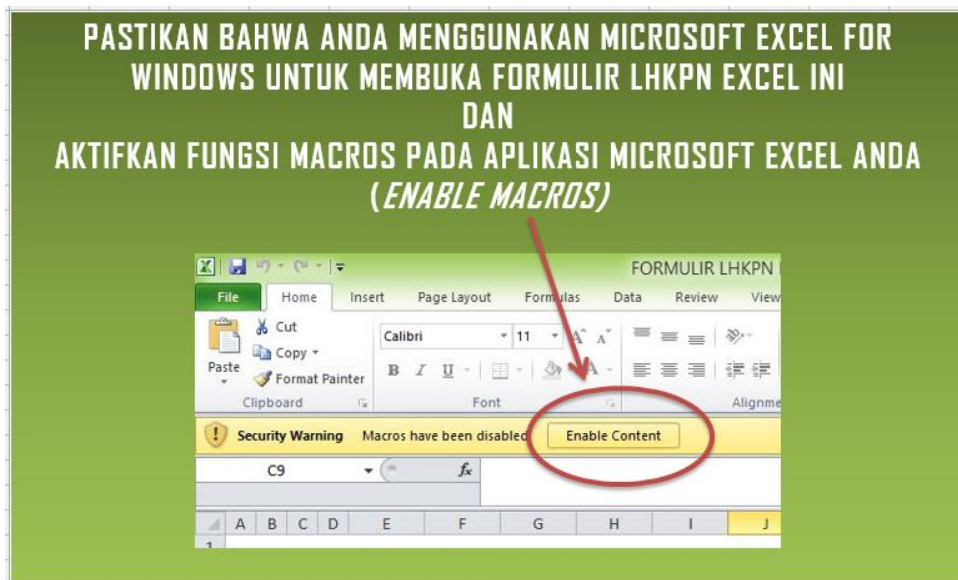


Cara Membuka File Formulir LHKPN 2017

Normalnya, saat anda pertama kali membuka aplikasi LHKPN versi excel dengan Ms.Office 2007 akan muncul tampilan sebagai berikut :



Namun Jika Ms. Office yang anda gunakan adalah versi 2010 keatas maka tidak muncul tampilan seperti diatas, sehingga anda perlu lakukan langkah-langkah berikut :

Tab File => klik Option

FORMULIR LHKPN KPK Ver 2.1 (Only for Microsoft Excel for Windows) ERWIN - E-LHKPN KPK

Info

FORMULIR LHKPN KPK Ver 2.1 (Only for Microsoft Excel for Windows) ERWIN
D: » Erwin PC » LHKPN 2018

Protect Workbook

The structure of the workbook has been locked to prevent unwanted changes, such as moving, deleting, or adding sheets.

One or more sheets in this workbook have been locked to prevent unwanted changes to the data.

■ Petunjuk	Unprotect
■ I	Unprotect
■ II	Unprotect
■ III	Unprotect
■ IV.1	Unprotect
■ IV.1 (2)	Unprotect
■ IV.2.1	Unprotect
■ IV.2.2	Unprotect
■ IV.3	Unprotect
■ IV.4	Unprotect
■ IV.5	Unprotect
■ IV.6	Unprotect
■ V.Penerimaan	Unprotect
■ VI.Berakumulasi	Unprotect

Properties

Size: 660KB
Title: Add a title
Tags: Add a tag
Categories: Add a category

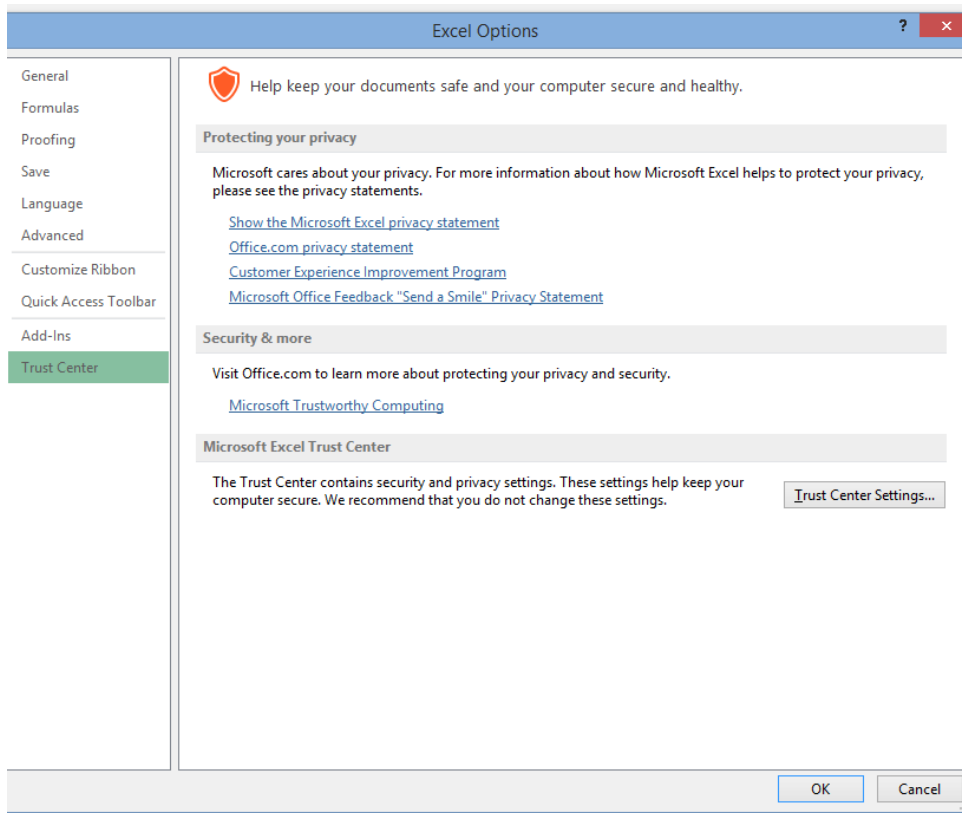
Related Dates

Last Modified: Today, 16:38
Created: 11/08/2009 13:
Last Printed: 21/03/2017 18:

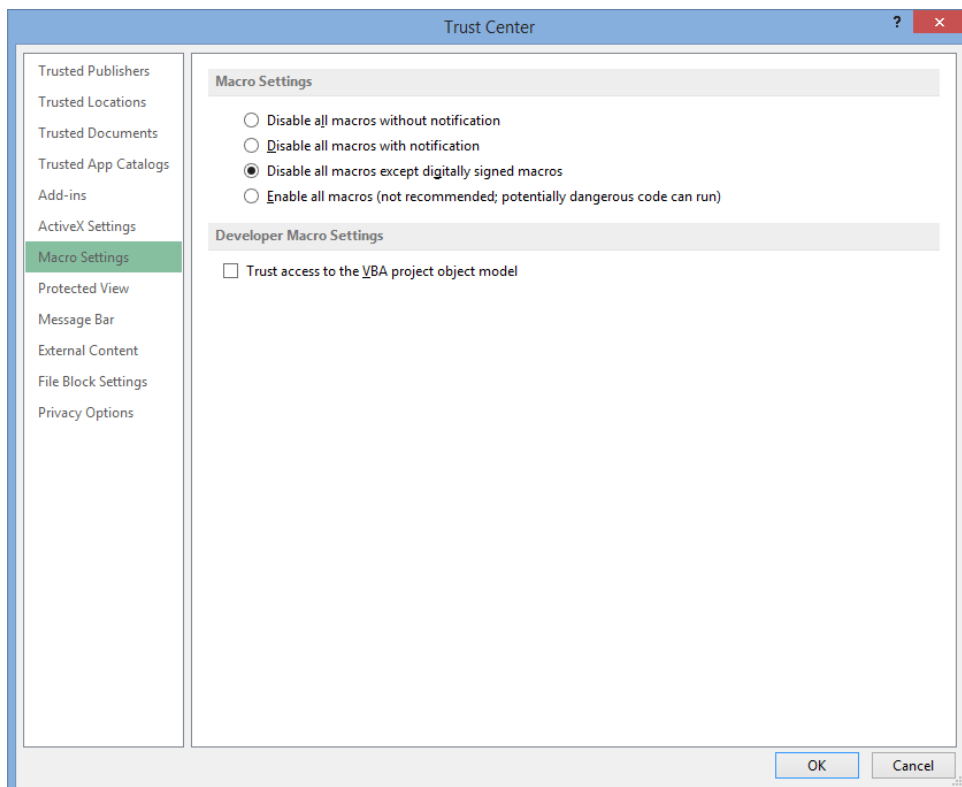
Related People

Author: Agus!
Add an author
Last Modified By: SUBB,

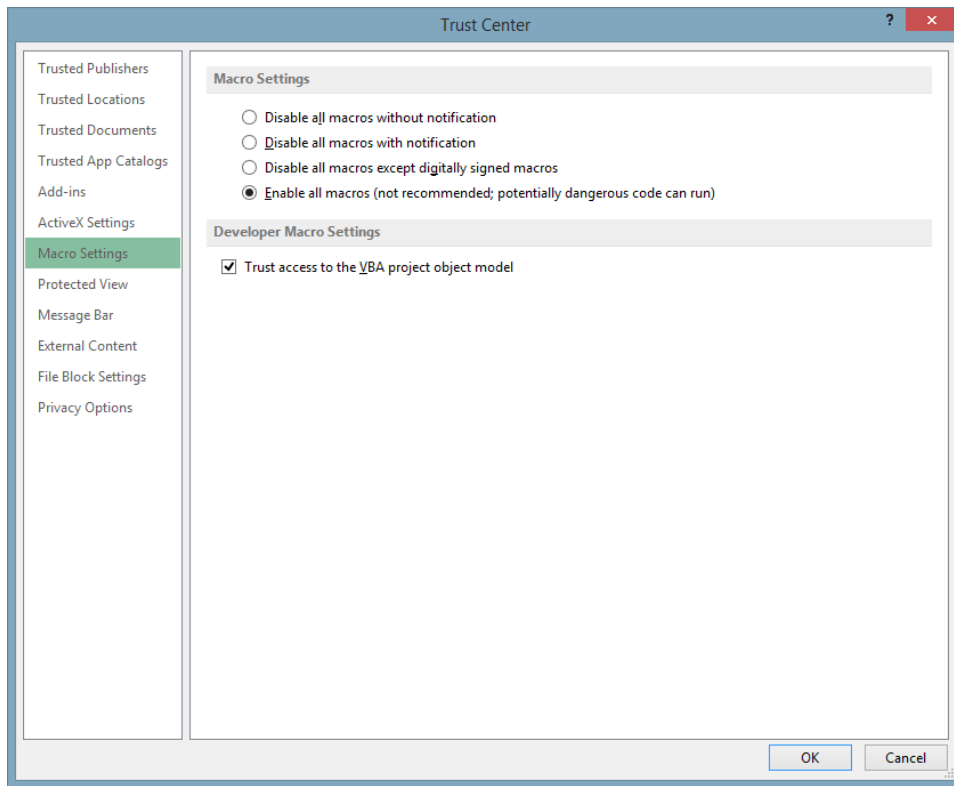
Klik Trust Center => maka akan Muncul Tampilan berikut



Klik Tombol **Trust Center Settings** kemudian klik Tombol **OK** maka akan muncul tampilan berikut :



Pilih Macro Settings => pilih Enable all Macros => centang (v) pada kotak Trust access do The VBA Prospect object model, seperti pada tampilan berikut.



=> klik Tombol **OK** => **OK** => tutup excel dan buka lagi, Aplikasi Form LPHKN sudah bisa digunakan.

Selamat Mengisi LHKPN